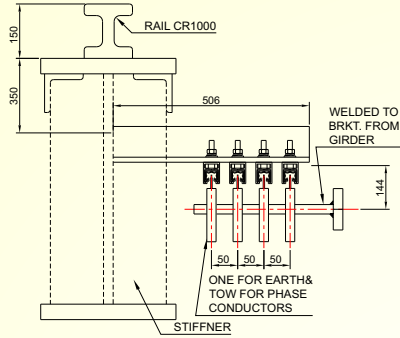
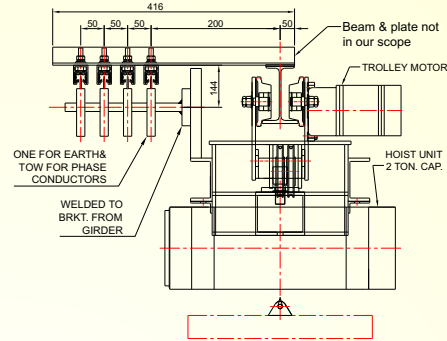


Unipole Insuated Conductor Bar System (Pin Joint)

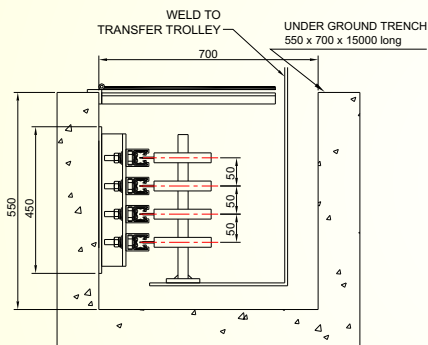
TYPICAL INSTALLATION



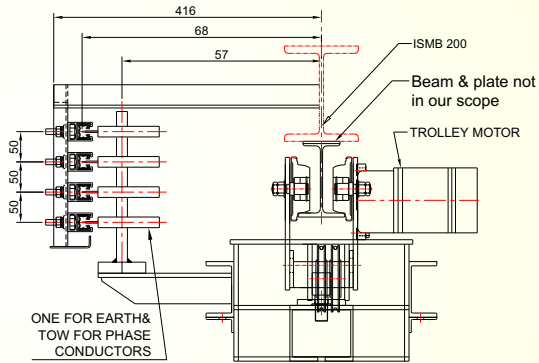
Safeline-M General Arrangement



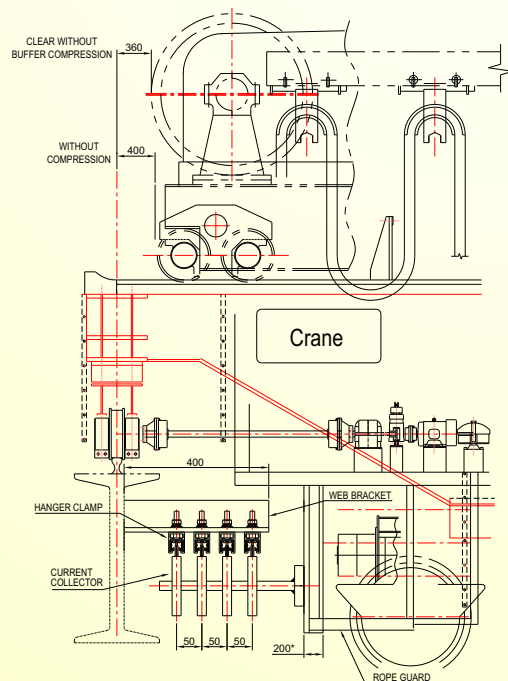
Safeline-M General Arrangement



Safeline-M General Arrangement



Safeline-M General Arrangement



Safeline-M General Arrangement

- Single Pole individually insulated conductor
- Pin Joint arrangement
60, 100, 125, Amps G. I.
160, 250, 315, Amps Copper